

BL30

Light Cane Muscovado Sugar

Ragus®
Specialists
in Sugars

Declaration For Use

Sugar
Cane molasses

Description

A light brown crystalline sugar

Typical Analysis

Approx. (on sample)

Invert Sugar
Polarisation

0.74%
+96.75°ISS

Ash

0.6%

Sulphur Dioxide

<9ppm

Shelf Life

In excess of 18 months if good storage practice is observed. This product does not require a best before date (refer to Food Labelling regulations, 1996)

Recommended Storage

15 – 20°C, dry conditions



QMF35/BL30

Issue: C02

Date: 01/09/2016

Authorised: Richard Livermore

Our products are sold with no warranty whether expressed or implied. All information shown has been based on laboratory or field experience only. Our products should be tested by purchasers to determine the suitability of our products for their particular purpose.



Real Sugar



Fairtrade Foundation



Organic Food Federation



ISO Certified



NBC Certified



Bee Farmers' Association



Kosher Certified

BL30

Light Cane Muscovado Sugar

Ragus®

Specialists
in Sugars

Microbiological Data	Specification Target	Specification Reject
TVC	<1200/g	>1200/g
E. coli	Not Detected in 10g	Detected in 10g
Salmonella spp.	Not Detected in 25g	Detected in 25g
Yeast	<100/g	>100/g
Mould	<100/g	>100/g
Osmophilic Yeast	<100/g	>100/g
Osmophilic Moulds	<100/g	>100/g

Food Tolerance Data	Present
Milk/Lactose	–
Egg/Egg products	–
Kiwi Fruit	–
Gluten**	–
Maize/Maize Derivative	–
Wheat/Wheat Derivative	–
Soya/Soya Derivative	–
Peanut	–
Sesame Seed/Derivative	–
Nut/Nut Oil*	–
Beef/Beef by-products	–
Added salt	–
Celery/Celeriac	–
GMO	–
Lupin	–
Mollusc/Mollusc Derivative	–
Fish/Fish Derivative	–
Mustard/Mustard Derivative	–
Crustaceans/Crustacean Derivative	–
Suitable for Vegetarians	YES
Kosher	NO

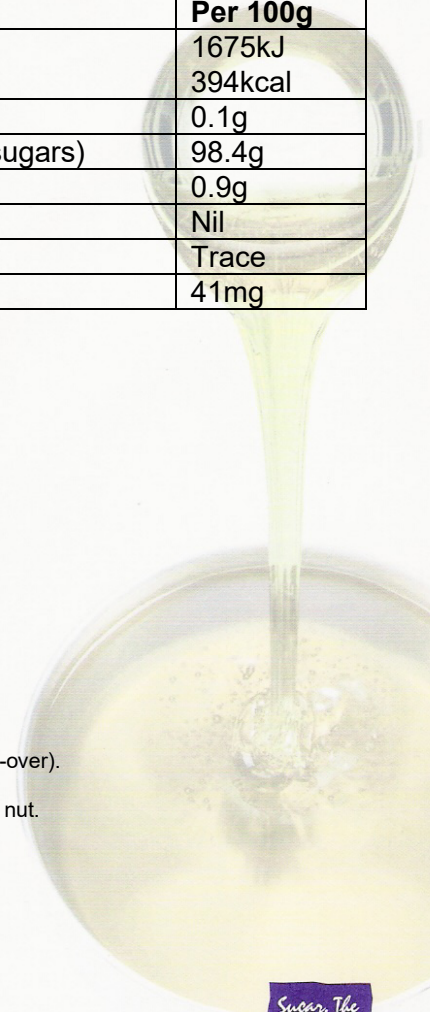
Nutritional Information	
Typical Data	Per 100g
Energy	1675kJ 394kcal
Protein	0.1g
Carbohydrate (as sugars)	98.4g
Moisture	0.9g
Fat	Nil
Fibre	Trace
Sodium	41mg

+ Contains the mentioned substance (as an ingredient) or may contain the mentioned substance (through carry-over).

– Free from the mentioned substance (according to the recipe).

* i.e. Almond, Hazelnut, Walnut, Cashew nut, Pecan nut, Brazil nut, Pistachio nut, Macadamia and Queensland nut.

** Codex guidelines (Standard 118-1981) Gluten <20ppm.



QMF35/BL30

Issue: C02

Date: 01/09/2016

Authorised: Richard Livermore

Our products are sold with no warranty whether expressed or implied. All information shown has been based on laboratory or field experience only. Our products should be tested by purchasers to determine the suitability of our products for their particular purpose.



Real Sugar



Fairtrade Foundation



Organic Food Federation



ISO Certified



NBC Certified



Bee Farmers' Association



Kosher Certified